

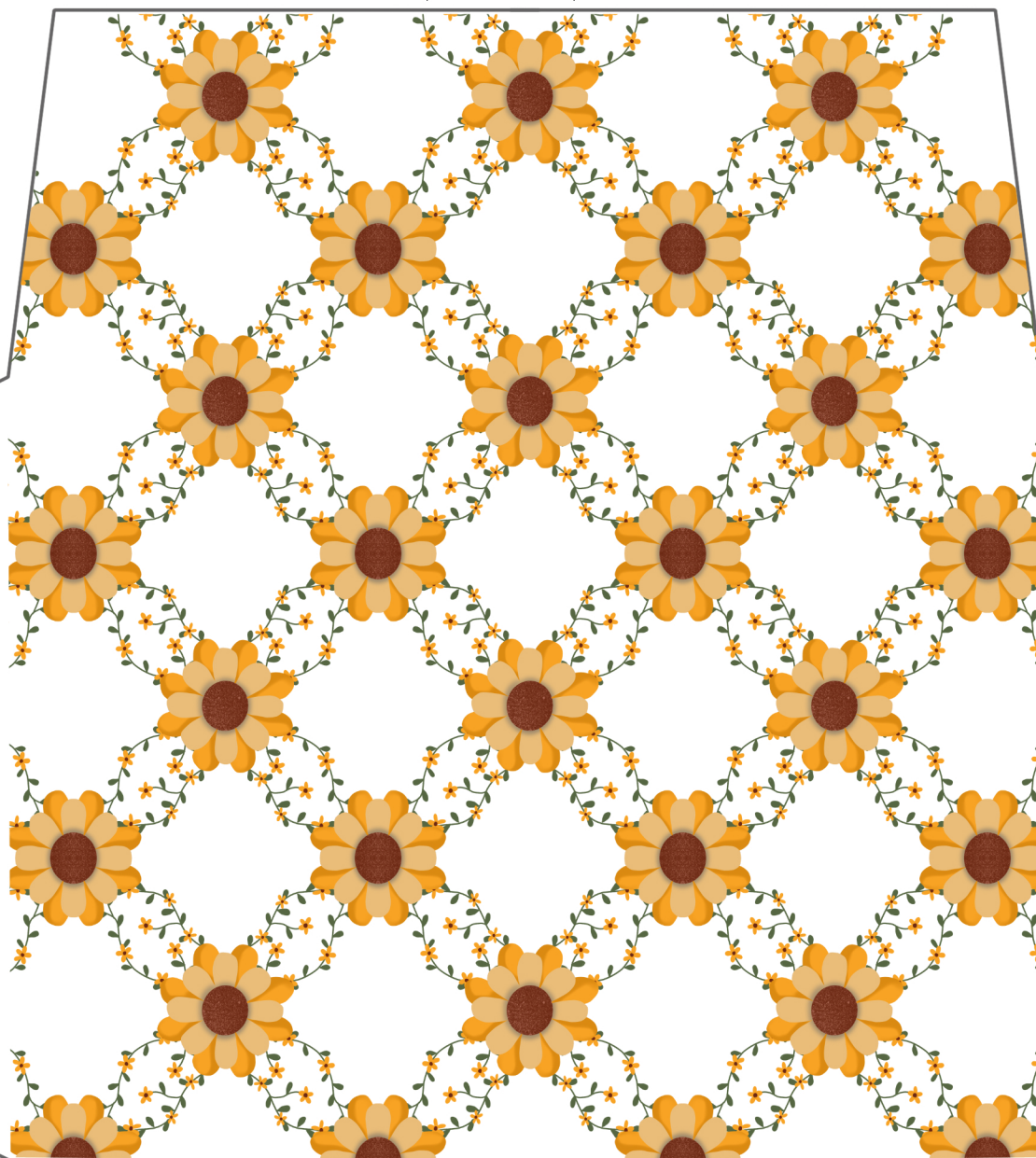
Printable Envelope

Step 5: Fold top down

Step 1:
Cut out
around the
black line.
Fold as
indicated in
steps 2-5.

Step 2: Fold side in

Step 3: Fold side in



Step 6:
Use a small
amount of
glue, tape or
adhesive dots
to hold the
envelope
together.

Step 4: Fold flap up

